

Independence enabling
Sea Access Device
for People with Disabilities
and Mobility Issues





Brief Description

Offers people with disabilities and mobility issues **unassisted sea access**.

A technological solution that promotes **quality and wellness** in everyday life.

Encourages **integration and inclusion** of all members of society.

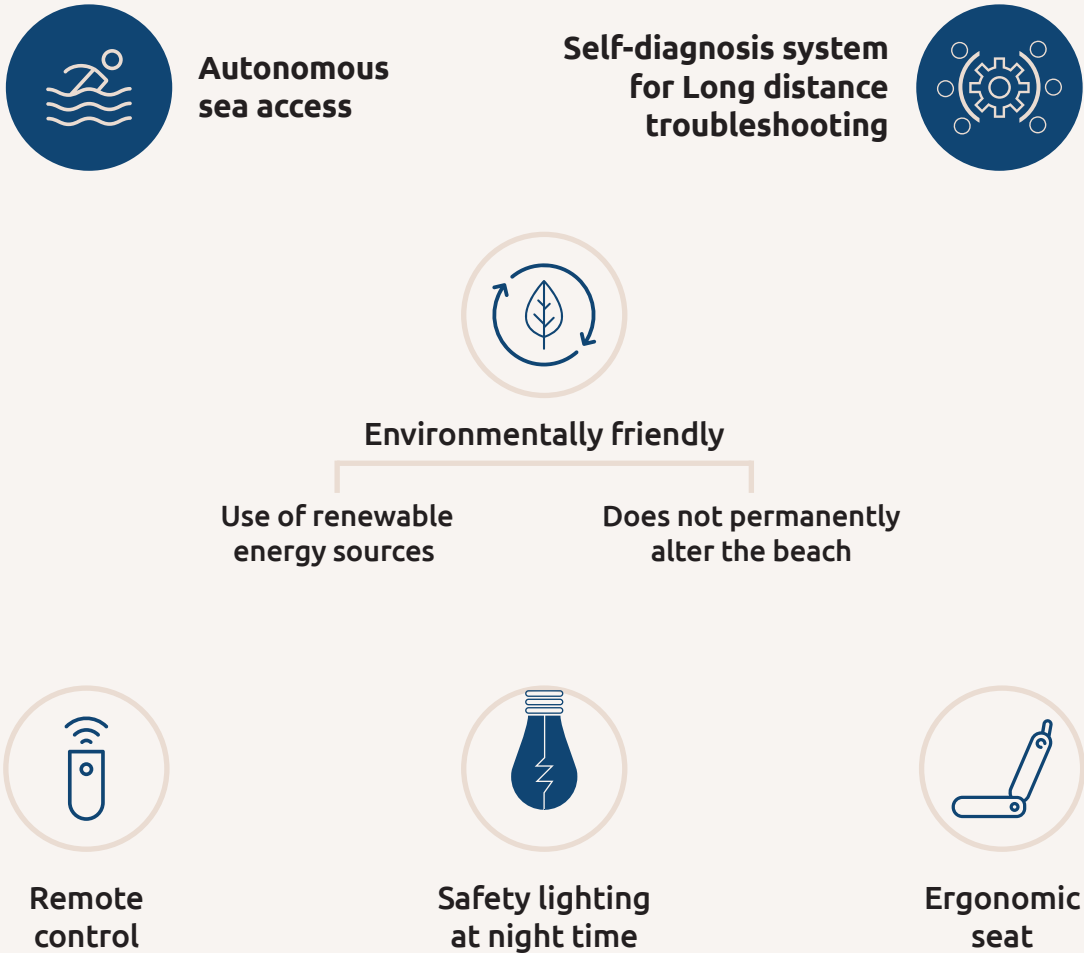
Assists **escorts / caretakers / families** of people with disabilities.

seatrac

Seatrac Parts

- ✓ Tower containing the motion mechanism and electrical equipment of the device
- ✓ Modular tracks and their accessories
- ✓ Handrail
- ✓ Moving carriage with custom seat
- ✓ Watertight central control panel
- ✓ Solar panel
- ✓ Batteries
- ✓ Light signaling
- ✓ Remote Control
- ✓ Appropriate labeling

Main Features



INNOVATION
Artificial Intelligence to protect privacy

Model	Seatrac MK5
Tracks material	INOX 316L
Handrail material	INOX 316L
Carriage material	INOX 316L
Tower material	INOX 304
Plastic parts type	PE – PVC – PLA
Wooden parts type	Highly durable decking for sea and beach use
Seat fabric	Perforated, antifungal synthetic fabric
Maximum user weight	120 kg
Current type	DC
Power supply	Solar panel and rechargeable batteries
Electric motor power supply	12 V
Electronic control unit power supply	24 V
Moving speed	0.15 m/sec
Maximum number of uses per day	60
Maximum number of uses in the shade	90
Maximum device length	26 m

Edition	MK5 basic	MK5 full
Tower containing the motion mechanism and electrical equipment of the device	✓	✓
Modular tracks	✓	✓
Handrail	✓	✓
Moving carriage with custom seat	✓	✓
Wire ropes	✓	✓
Watertight electronic control unit	✓	✓
Solar Panel	✓	✓
Rechargeable batteries	✓	✓
Light signaling of tracks	✓	✓
Remote Control	✓	✓
Labeling	✓	✓
Shower		✓
Light alarm system		✓
Router to remotely monitor proper functioning of the device		✓
Software for proper function monitoring and damage diagnostics		✓
Cameras with human presence recognition and blurring software to capture pictures from the beach		✓
Water and air temperature sensors		✓

Installation Features

Seatrac MK5

Desirable sea depth when the device seat reaches the ending point of the tracks for the user to get off and on it	0.7 – 0.8 m
Maximum distance from shore to achieve desirable sea depth	16 m
Desirable distance of the device seat from the ground at the starting point of the tracks for the user to get off and on it	0.5 m
Structure support system	Piling
Minimum length of piles in the ground to appropriately support the structure	0.6 m

Instructions



1

Position the wheelchair next to the SEATRAC seat.

2

Move yourself on the seat and position your body in the center with your back resting on the back of the seat.

3

Place your feet on the footrest of the seat .

4

After checking the track is free, use the remote control (left button) to reach the sea.

5

The seat stops automatically and the ending point of the tracks (handrail) so that you can get off the seat and start swimming.

6

Use the handrail and the buoyant force of the water to help you get in and out of the sea.

7

After swimming, place yourself back on the seat, in the same position as when you entered the sea.

8

Use the remote control to return to the beach (right button) after checking the track is free.

9

The seat stops automatically at the starting point, if there is no other command.

Remote Control

LEFT button

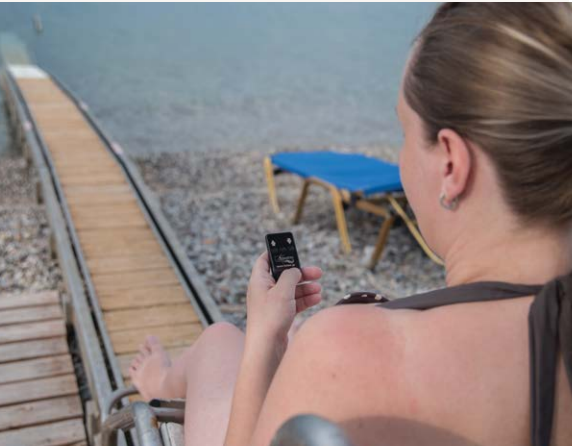
to move towards the SEA (ending point)

RIGHT button

to move towards the BEACH (starting point)

To **STOP** at any time, press **EITHER BUTTON** continuously for **2 seconds**.

All remote controls work with all SEATRAC devices.



Services

TOBEA, with end user information and feedback about satisfaction, created services that improve people’s visit to the beach.

seatrac Preview

Free service for all end users

Receive instant information on the state of all installed SEATRAC devices via sms and/or email.

Constant updates on installing, uninstalling, out of order status and subsequent repair for all devices.

This information is offered free of charge to all interested users when they register to the service.

my seatrac

Free service for all end users

You can register for free at www.seatrac.gr.

See live images from the beach, so that registered users can assess conditions before their visit and choose which beach to go to.

Waves, crowds, unclear water, wind... depending on your preferences, you can visit the beach that suits you!

Accessible Beaches Network in www.tobea.gr

Free service for all end users and customers

In www.tobea.gr there is a map with all SEATRAC devices installed, showing in real time where they are functioning, directing users to their precise location.

There is also information on the accessibility services at every beach.

Helpdesk

Free service for all end users and clients

Free support service 08.00 -17.00, Monday - Friday, tel. +30 2610 876000.

Maintenance and reinstalling package

After the first year of use.

Accessibility Chain



Parking Area



Beach Track



Restroom



Changing room (collapsible, non-permanent structure)



Shaded Area

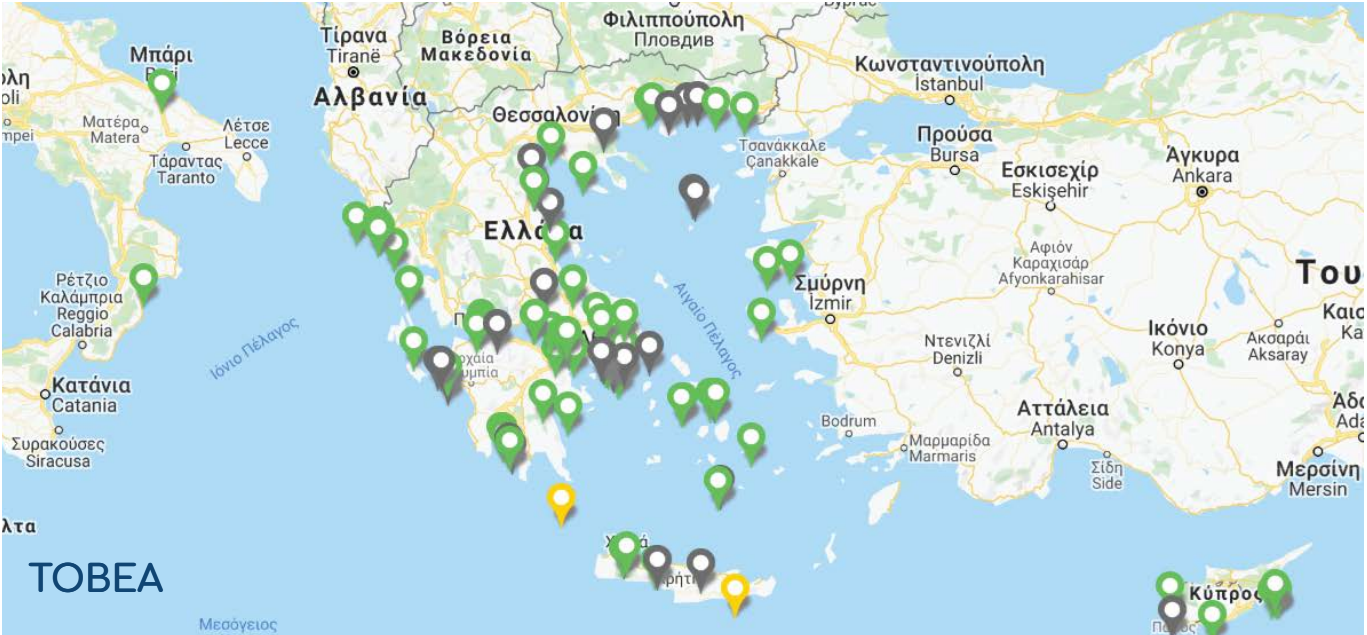


Shower



For a person with disabilities to be able to enjoy a day at the beach, a series of services is required. Our experience and our constant contact with beach goers helped us identify their needs and offer appropriate solutions.

More information in www.tobea.gr



Founded in 2012

The vision of the TOBEA team is to improve the quality of life of people with disabilities though innovative ideas and products. The aim of the company is to design, build and promote engineering applications that help society.

The company complies with the following quality management systems: **ISO 9001:2015 - ISO 14001:2015**

Patents

- ✓ Greece (Patent No.1008398)
- ✓ European Union (Patent No. EP 2539509)
- ✓ USA (Patent No. US 9,127,411 B2).
- ✓ Conforms to all applicable European Union directives and standards and has received a CE conformity marking.
- ✓ Community Trade Mark identification no. 012587887 registered 25/11/2014
- ✓ Industrial design no. 003851039-0001/003851039-0002 and 001463871-0001.

Conforms to all applicable European Union directives and standards and has received a CE conformity marking. Conforms to EU directives 2006/42/EC, 2004/108/EC, 1999/5/EC, Council Recommendation 1999/519/EC, according to the relevant European harmonized standards mentioned below.

European harmonized standards:

EN 12100: 2010
EN 349: 1998 + A1:2008
EN 60204 -1 : 2006 + A1 : 2009
EN ISO 11202: 2010
EN ISO 3746: 2010
ELOT EN 55022 E5: 2010
ELOT EN 61000-6-1 E2:2007
ELOT EN 61000-4-2 E2: 2009
ELOT EN EN 61000-4-3 E3 2006+A1: 2008+A2 2010+ IS1:2009
EN 60950-1:2006+A11:2009+A1:2010
EN 301 489 -1
EN 301 489 -3
EN 300 220 -1
EN 300 220 -2
EN 62479: 2010

Awards



National Award
in the 2nd "Greece Innovates" competition, a joint initiative of Eurobank and SEV (Hellenic Federation of Enterprises)

National Award
in the category Innovation of the European Business Awards

National award in "Chivas Venture" competition
for social entrepreneurs

Company for Health Technology



Follow us:
ΑμεΑ-Δικαίωμα στην θάλασσα



More information in:
www.tobea.gr

 Old Patras - Athens Road 289, 26504, Arahovitika, Greece

 +30 2610 93 22 40  +30 2610 93 22 43

 info@tobea.gr

 TOBEA

 TOBEA

 TOBEA

www.tobea.gr